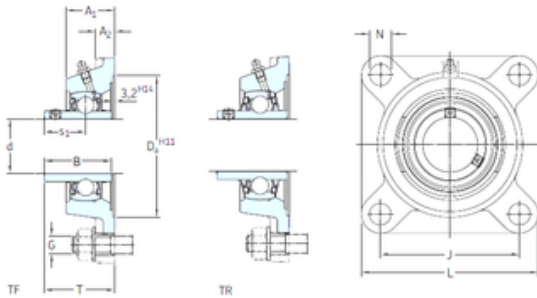


## skf FY 45 TR Ball bearing square flanged units



Bearing No. FY 45 TR

Bore Diameter	45 mm
d	45 mm
Da	119,1 mm
s1	30,2 mm
A1	39 mm
B	49,2 mm
G	14 mm
J	105 mm
L	137 mm
N	16 mm
T	54,2 mm
A2	14 mm
Weight	2,1 Kg
Basic dynamic load rating (C)	33,2 kN
Basic static load rating (C0)	21,6 kN
Fatigue load limit (Pu)	0,915
Category	Flange Block Bearings
Inventory	0.0
Manufacturer Name	SKF
Minimum Buy Quantity	N/A
Weight / Kilogram	2.103
EAN	7316570215380
Product Group	M06110
Number of Mounting Holes	4
Mounting Method	Set Screw
Housing Style	4 Bolt Square Flange Block

FY 45 TR Bearing 2D drawings and 3D CAD models



# NTN BEARING MANUFACTURING DE MEXICO,S...

Rolling Element	Ball Bearing
Housing Material	Cast Iron
Expansion / Non-expansion	Non-expansion
Mounting Bolts	14 Millimeter
Relubricatable	Yes
Insert Part Number	YAR 209-2RF
Seals	Multi Function Seal
Housing Configuration	1 Piece Solid
Pilot Configuration	No Pilot
Inch - Metric	Metric
Long Description	4 Bolt Square Flange Block; 45MM Bore; 148MM Bolt Circle; 105MM Bolt Spacing; 1 Piece Solid; Set Screw Mount; Cast Iron; Ball Bearing; 49.2MM Length Thru Bore; Relubricatable; Multi Function Seal Seal
Other Features	Single Row   Standard Duty   Wide Inner Race   Open End   Has Flinger   Y Bearing
Category	Flange Block
UNSPSC	31171501
Harmonized Tariff Code	8483.20.40.40
Noun	Bearing
Keyword String	Flanged
Manufacturer URL	<a href="http://www.skf.com">http://www.skf.com</a>
Manufacturer Item Number	FY 45 TR
Weight / LBS	4.63
Bore	1.772 Inch   45 Millimeter
Cartridge Pilot Depth	0 Inch   0 Millimeter
Bolt Spacing	4.134 Inch   105 Millimeter
Nominal Bolt Circle Diameter Round	5.8 Inch   148 Millimeter



# NTN BEARING MANUFACTURING DE MEXICO,S...

Cartridge Pilot Diameter	0 Inch   0 Millimeter
Length Thru Bore	1.937 Inch   49.2 Millimeter
Housing material	Cast iron
$D_a$	119.1 mm
$D_{b1}$	102 mm
$D_{b2}$	112 mm
A	39 mm
$A_1$	14 mm
$A_3$	3.2 mm
$A_5$	23 mm
$s_1$	30.2 mm
$R_G$	1/4-28 UNF
$R_1$	24.5 mm
$D_N$	6.5 mm
$SW_N$	7 mm
$G_N$	1/4-28 SAE-LT
$J_6$	123 mm
$J_7$	33.5 mm
$N_4$	4 mm
Basic dynamic load rating C	33.2 kN
Basic static load rating $C_0$	21.6 kN
Fatigue load limit $P_u$	0.915 kN
Limiting speed	2400 r/min
Mass bearing unit	1.9 kg
Thread grub screw $G_2$	M8x1
Hexagonal key size for grub screw N	4 mm
Recommended tightening torque for grub screw	6.5 N · m
Recommended diameter for attachment bolts, mm G	14 mm
Recommended diameter for attachment bolts, inch G	0.5625 in